

CATCO

CATALYTIC HEATER COMPANY

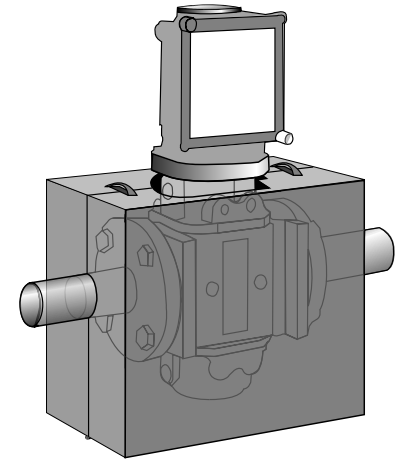
HEATER ENCLOSURE PACKAGE *For Rotary Meters*

GENERAL DESCRIPTION

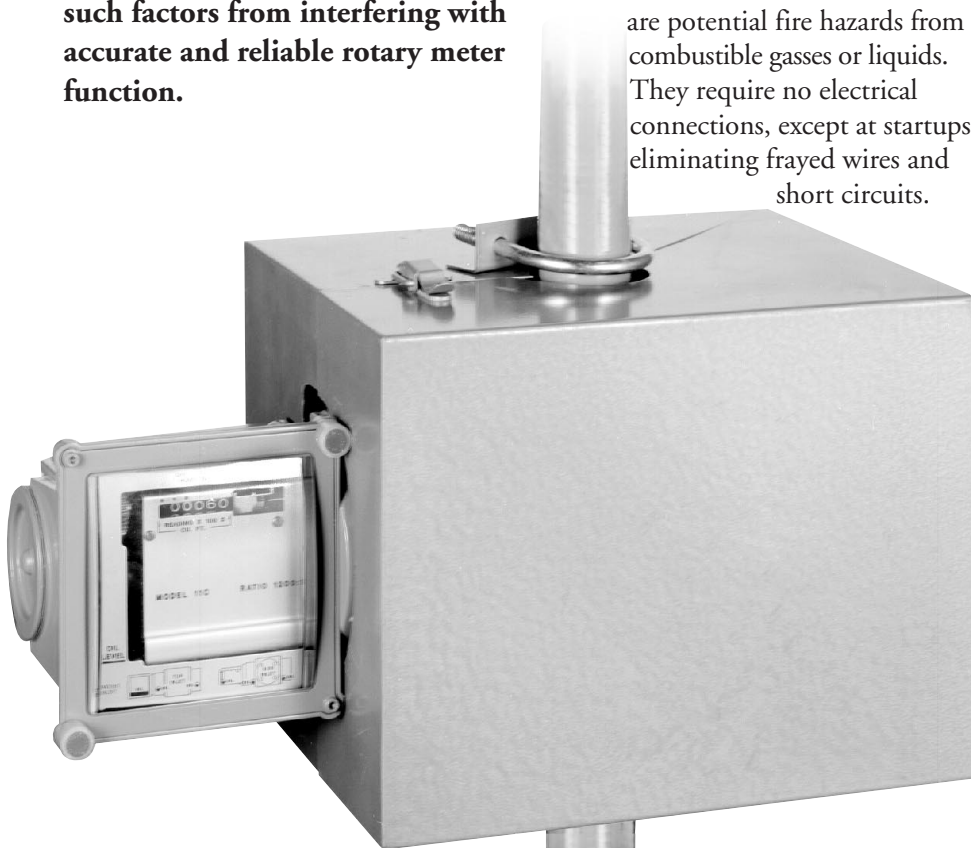
When subjected to less than ideal conditions (freezing temperatures, wet gas, hydrate formation), rotary meters can fail to operate properly. Application of heat can prevent such factors from interfering with accurate and reliable rotary meter function.

Safety

Using the principle of catalytic combustion, catalytic heaters operate at a surface temperature of 600-800 F°, much lower than an open flame (approximately 1300 F°). They are a safe source of heat in areas where there are potential fire hazards from combustible gasses or liquids. They require no electrical connections, except at startups, eliminating frayed wires and short circuits.



Typical Heater Enclosure for Rotary meters



ADVANTAGES OF CATALYTIC HEAT

Efficiency

Catalytic heaters generate radiant (infrared) energy which can be directed on a particular object or target. Energy is not wasted on heating other objects or the air surrounding them.

Simplicity

Catalytic heaters contain no moving parts and, once energized, will function indefinitely as long as adequate supplies of air and clean fuel are provided. These factors make catalytic heaters ideal for remote applications.

DESIGN CONSIDERATIONS

- Reading of the rotary meter does not require removal of the enclosure
- Installation is quick and easy, requiring a minimal amount of tools
- Easy access is provided for rotary meter service

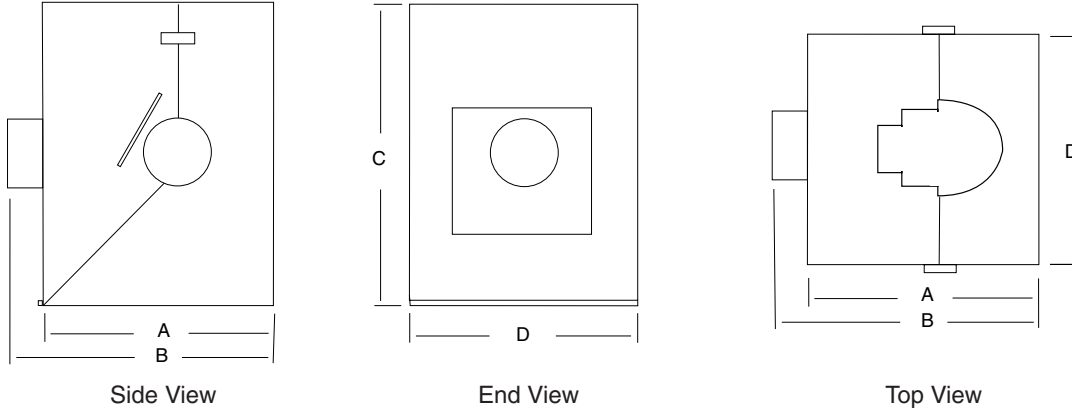


Heater positioned for maximum radiation into meter body

Available Models

Custom made enclosures are available for many other rotary meter applications not depicted below.

Typical Rotary Heater Enclosure Package



In a Hurry?

Normally, CATCO ships stock enclosure packages next day, and custom designs within a week.

CATCO enclosure packages are designed for easy installation with a minimum of tools required. In most cases installation is simply a matter of snapping the enclosure package around the appliance or pipe and supplying gas to the heater; screws and loose parts are kept to a minimum. Unless otherwise requested by the user, all parts are shipped with the enclosure package so that the unit is complete and ready to install when received in the field.

The catalytic heaters used in enclosure packages may be supplied with either 12 or 120 volt preheat systems and can be fueled with either natural gas or LPG.

FEATURES

- Hinge and latch construction
- Simple installation
- Versatile, fits numerous brands and sizes
- Packages are available in painted carbon steel or stainless steel

OPTIONS

- Explosion proof junction box
- Thermostatic controls for regulating heater output
- FM approved heaters for Class I, Div. II areas
- CGA approved heaters for Class I, Div. I & II areas

Model No.	Typical Application	Heater Size	BTU	Dimensions (inches)			
				A	B	C	D
70-051	Roots 8C, 11C	66	1,500	10.00	13.00	9.00	10.00
70-053	Roots 1.5C, 2C, 3C	66	1,500	11.00	14.00	10.00	12.50
70-055	Roots 5M	88	2,700	11.00	14.00	10.75	15.40
70-057	Roots 7M	88	2,700	13.00	16.00	13.50	13.00
70-058	Roots 11M	1012	5,000	13.00	16.00	13.50	21.25